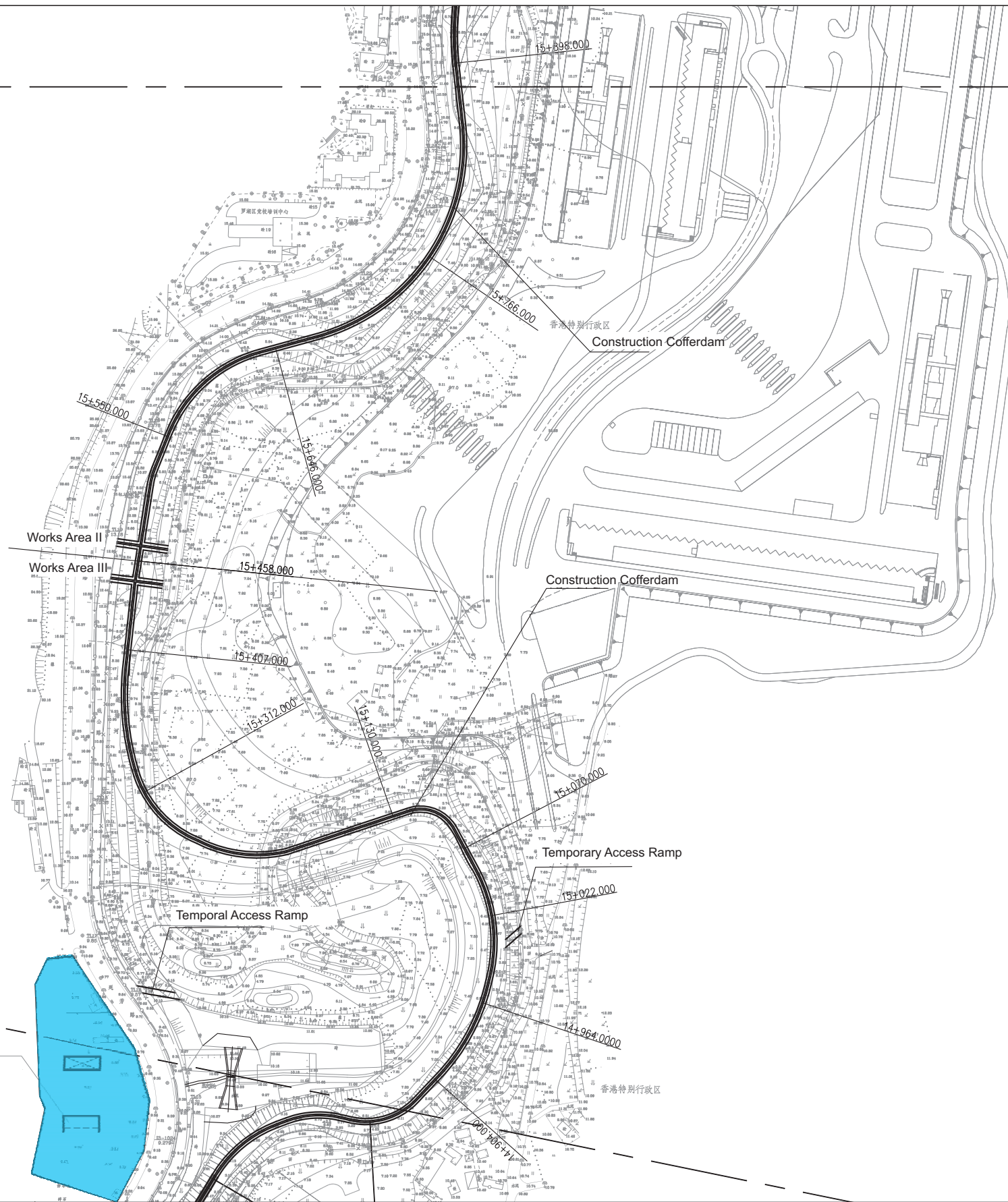




Figure 3.14 Locations of Stockpiling Areas (1/4) and Site Offices

Adjoining Line 2



- Key
- Site Office
  - Construction Materials Storage Area
  - Stockpiling Area

Adjoining Line 1

Site Office No.1  
Temporary Land Requirement: 8763 m<sup>2</sup>

深圳市治理深圳河办公室

Drainage Services Department  
香港渠务署

Figure 3.15

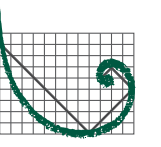
Locations of Stockpiling Areas (2/4) and Site Offices

FILE: 0101759u5  
DATE: 28/06/2010



长江水资源保护科学研究所

CHANGJIANG WATER RESOURCES PROTECTION INSTITUTE



ERM

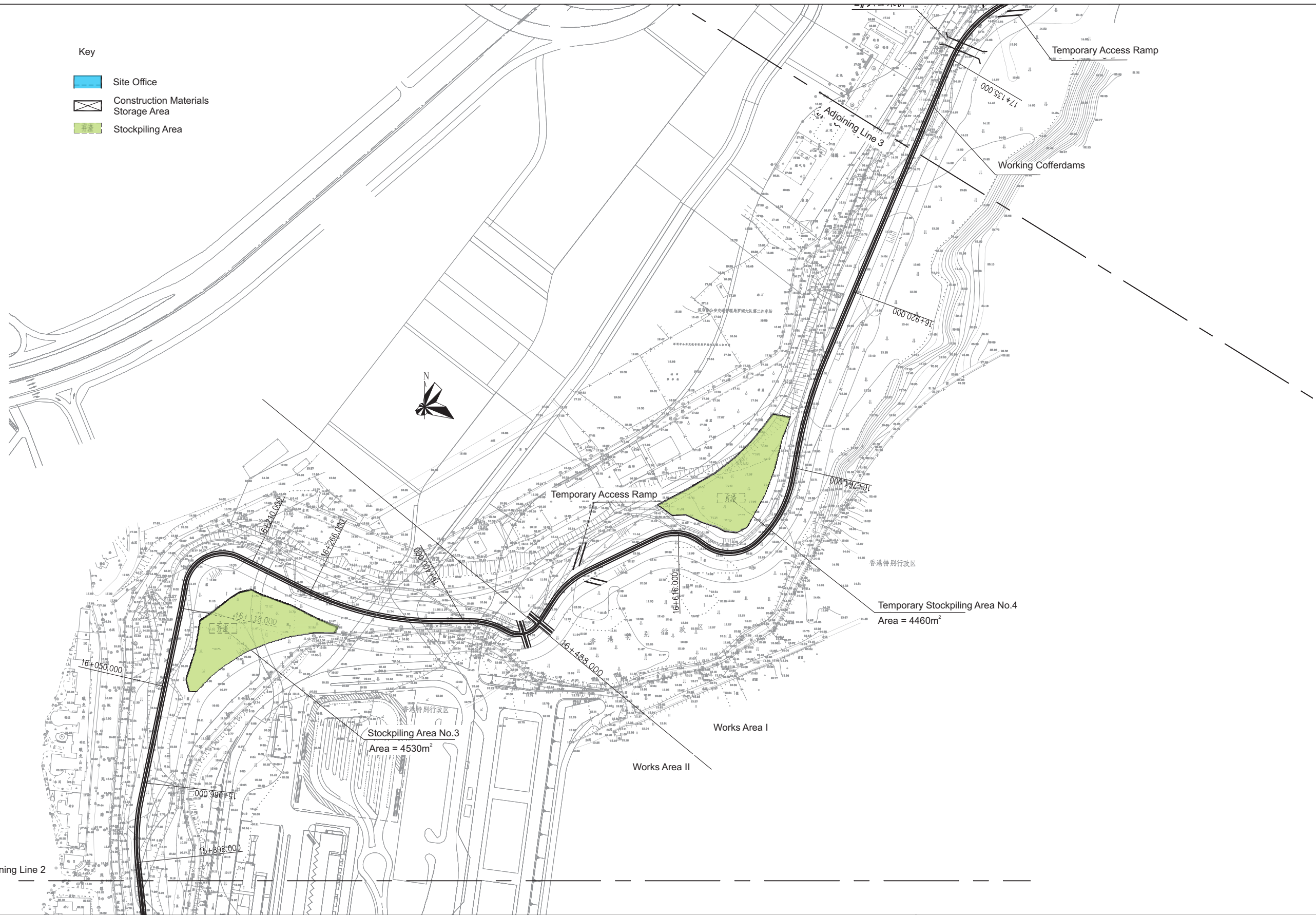


Figure 3.16 Locations of Stockpiling Areas (3/4) and Site Offices

